

AS Series

PN25048 · PN25108 · PN25128 · PN25168 · PN25248 · PN25488
PN25041 · PN25101 · PN25121 · PN25161 · PN25241 · PN25481

Gigabit Unmanaged Ethernet Switches

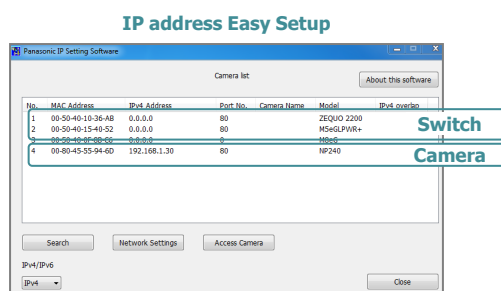
AS series are Edge switch with basic function, can be easily set with web-based GUI.

Ease of management

-Web-based configuration
Configuration that anyone can understand

-IP address Easy Setup (i-pro & SW)

The IP addresses for both the switches and cameras can be set up simultaneously using Easy IP Address Setup Software.



Camera and switch can be set on the same screen

PoE(Power over Ethernet)

-Selectable from 6 types of ports
(4,10,12,16,24,48 port)

Excellent install ability

-Compact body(4,10,12 port)
-Fan less
(PoE:4,10 port / Non PoE 4,10,12,16,24 port)

Example of Use

PoE Network of Small store and Office



Key Features

Original

•IP address Easy Setup

•Loop detection

When a loop occurs, the relevant port automatically shuts down.
record LOOP HISTORY and System Log

•VLAN

- ✓ IEEE802.1Q tag VLAN
- ✓ Port-based VLAN
- ✓ VLAN registration number 256 (including the default)

•QoS

- ✓ IEEE802.1 p
- 4 stage priority control of
- ✓ Priority Queuing (PQ: Absolute priority scheduling)

•Link aggregation

- ✓ IEEE802.3ad (Manual)

•Other

- ✓ Port monitoring
- ✓ Multicast address group – registration function
- ✓ Storm control function



Product Name (Product No.)	10/100/1000T	PoE Port	Max Power Supply	Size(H × W × D)	Fan
GA-AS4TPoE+ (PN25048)	6	4	62W	44 × 210 × 210 mm	Fanless
GA-AS10TPoE+ (PN25108)	12	10	70W	44 × 210 × 280 mm	Fanless
GA-AS12TPoE+ (PN25128)	14	12	84W	44 × 210 × 280 mm	Yes
GA-AS16TPoE+ (PN25168)	18	16	112W	44 × 330 × 230 mm	Yes
GA-AS24TPoE+ (PN25248)	26	24	168W	44 × 440 × 257 mm	Yes
GA-AS48TPoE+ (PN25488)	50	48	336W	44 × 440 × 386 mm	Yes
GA-AS4T (PN25041)	6	-	-	44 × 210 × 130 mm	Fanless
GA-AS10T (PN25101)	12	-	-	44 × 210 × 280 mm	Fanless
GA-AS12T (PN25121)	14	-	-	44 × 210 × 280 mm	Fanless
GA-AS16T (PN25161)	18	-	-	44 × 330 × 230 mm	Fanless
GA-AS24T (PN25241)	26	-	-	44 × 440 × 257 mm	Fanless
GA-AS48T (PN25481)	50	-	-	44 × 440 × 386 mm	Yes

Interface

Twisted pair port:

RJ45 connector

Transmitting and receiving network system :

IEEE802.3 10BASE-T
IEEE802.3u 100BASE-TX
IEEE802.3ab 1000BASE-T

Switching mode

Packet transfer capability: Non-blocking

Max 14,880pps/port(10Mbps)
Max 148,800pps/port(100Mbps)
Max 1,488,000pps/port(1000Mbps)

MAC Address table : Max 8K entry/unit
<PN25488·PN25481>

Max 16K entry/unit

Burrer memory: 512K Byte/unit
<PN25488·PN25481> 1.5M

Transmittable frames: EAP·BUDU

Software Specifications

Agent:

Management protocol : HTTP (RFC 2616)

Data transfer protocol : TFTP (RFC 783)

Loop detection:

When a loop occurs,
the relevant port automatically shuts down.
record LOOP HISTORY and System Log

Others:

Ping response (ICMP echo reply) function

Syslog Client (system log sent to a Syslog server)

TFTP Client (Firmware upgrade, save and read of configuration information)

SNTP Client

IP Address Easy Setting

Operation environment

Temperature: 0 - 40°C

Humidity: 20 - 80%RH (no condensation)

<GA-AS48TPoE+ (PN25488) >

Temperature: 0 - 50°C

Humidity: 20 - 80%RH (no condensation)

Layer 2 Switching Functions

VLAN:

IEEE802.1Q tag VLAN protocol

Port-based VLAN

VLAN registration number 256 (including the default)

Internet Mansion function

VLAN invalid setting function

Link aggregation:

IEEE802.3ad link aggregation function (Manual)

Port Monitoring:

A plurality of target port can be specified

QoS:

IEEE802.1p 4 stage priority control of Scheduling
scheme: Priority Queuing
(PQ: Absolute priority scheduling)

PoE power supply function:

IEEE802.3af/IEEE802.3at power supply function

Supply method : Alternative A

(Cable signal lines 1, 2, 3, and 6 are used.)

Time setting:

SNMP settings, time manual setting

Multicast:

Multicast address group registration function.
(can be up to 256 groups of registration)

Storm control function:

Unknown unicast / Broadcast / Multicast of -
possible control the storm

Rated

Power supply:

AC100-240V, 50/60Hz, 2.0A (with a built-in power supply)

Environmental Conditions

EMC compliance:

CISPR 22 Class A, EN 55022 Class A, EN 55032 Class A

AS/NZS CISPR22 Class A

VCCI Class A

EN 61000-3-2, EN 61000-3-3

CISPR 48, EN 55048

IEC 61000-4-2, IEC 61000-4-3, IEC 61000-4-4,

IEC 61000-4-5, IEC 61000-4-6, IEC 61000-4-8,

IEC 61000-4-11

Safety compliance: IEC 60950-1 EN 60950-1

Environment compliance: RoHS compliant

Panasonic

Panasonic Life Solutions Networks Co., Ltd

<https://panasonic.co.jp/ls/plsnw/english/>