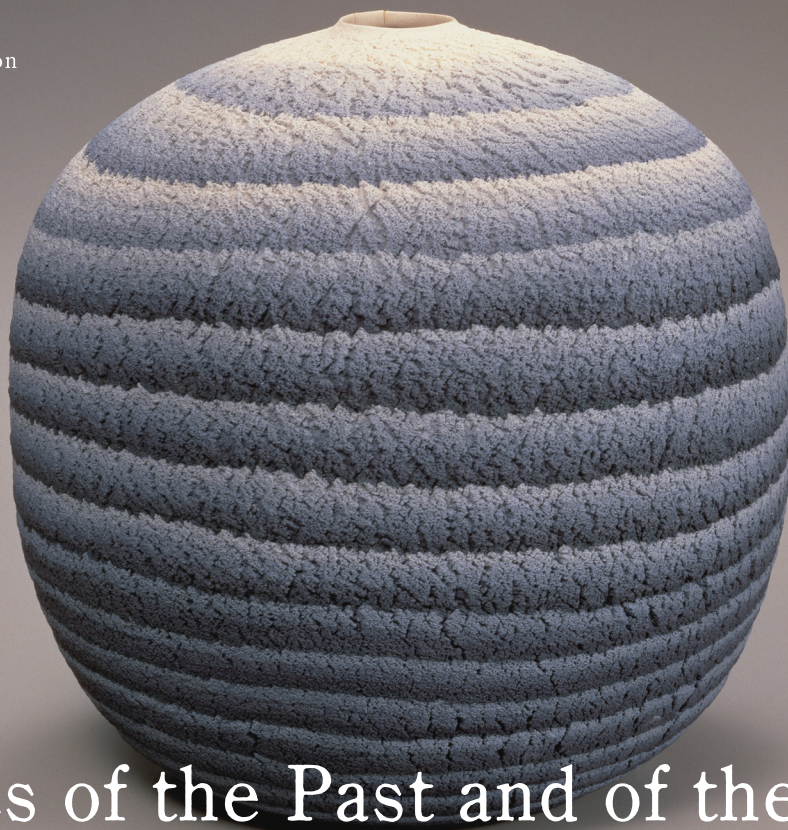


50 Years of Ceramic Art
The Japan *Kōgei* Association
Ceramic Arts Section



Ceramics of the Past and of the Future: The Timelessness of Traditional Japanese Craft Arts



2022.1.15 **Saturday** – 3.21 **Monday**
and holiday

Closed: Wednesdays (Except for Feb. 23) Hours: 10 a.m. – 6 p.m. (Admittance until 5:30 p.m.) *Open until 8 p.m. (Admittance until 7:30 p.m.) on Feb. 4 and Mar. 4

Adults: ¥1,000 Visitors aged 65 or over carrying proof of age: ¥900 Students (College): ¥700 Students (High / Middle school): ¥500

Admission is free for children in primary school and younger. Admission is free for disability passbook holders and up to one accompanying adult.

Organizers: Panasonic Shiodome Museum of Art, Japan *Kōgei* Association, NHK PROMOTIONS INC.

Producer: NHK ENTERPRISES, INC. (Nagoya Branch Office)

Supporter: Minato City Board of Education

Panasonic Shiodome Museum of Art
ROUAULT GALLERY

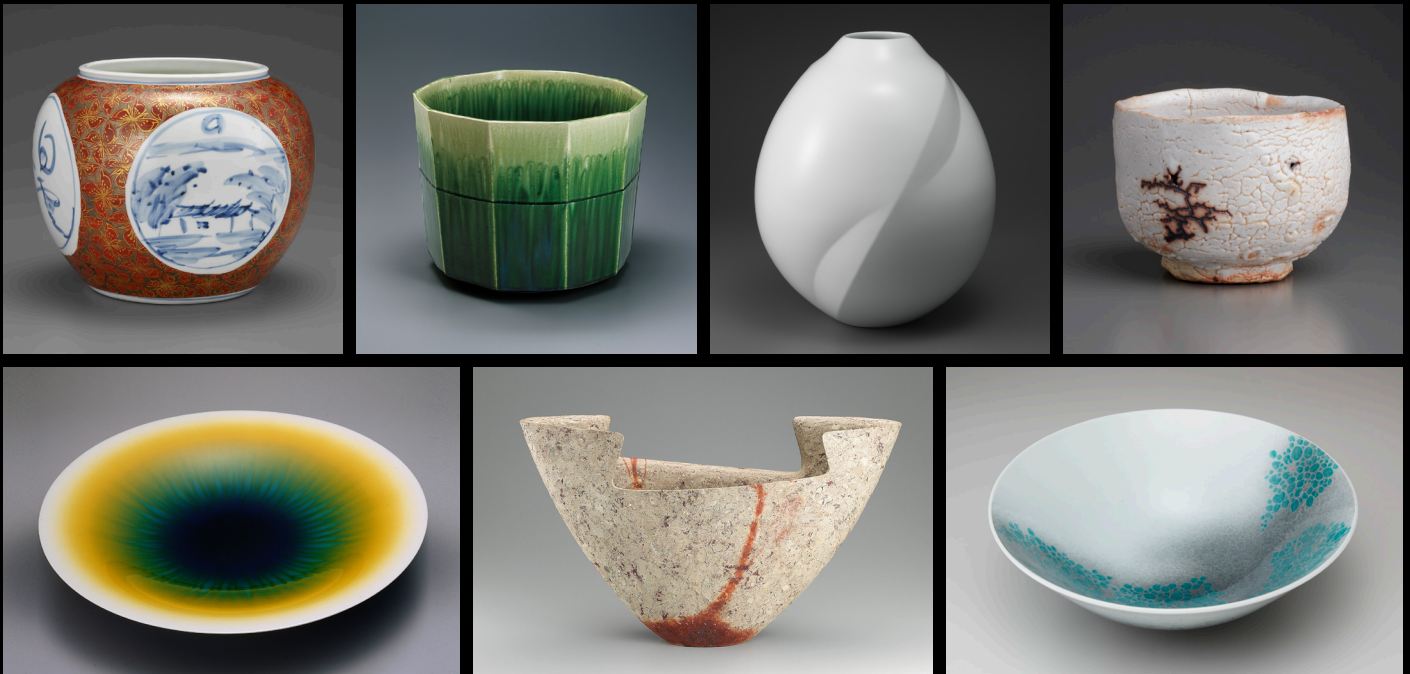


We would like to request that you reserve the date and time of your visit in advance.
Please visit our website for more details.

Ceramics of the Past and of the Future: The Timelessness of Traditional Japanese Craft Arts

Japan's proud tradition of ceramic art has diversified in technique and artistic style over the centuries and continues to evolve in remarkable ways today. Ceramicists have become more prolific since the postwar era, producing ambitious works one after another. In 1950, the Japanese government enacted the Law for the Protection of Cultural Properties to preserve and promote artisan crafts known as *Kōgei*, which are artisan crafts associated with specific regions and craft traditions within Japan and encompass a variety of disciplines including ceramics. Following an amendment to the law in 1954 that allowed for individual craft artists to be designated as Preservers of Important Intangible Cultural Properties (or Living National Treasures), a group of such artists founded the Japan *Kōgei* Association in 1955. The association was cofounded with other artisans and craftspeople working in the various fields of traditional *Kōgei*. Members of the association display their art at the Japan Traditional *Kōgei* Exhibition. In addition,

every year since 1973, the Ceramics Division of the association has hosted an Exhibition of New Ceramic Works, an opportunity for member artists to showcase their latest works. In commemoration of the 50th anniversary of the Japan *Kōgei* Association's Ceramic Arts Section, this exhibition offers a retrospective view on the organization's history and a selection of masterpieces by its artists. The artistry and beauty of ceramic art are demonstrated in a selection of tea bowls and other works by artists who have mastered the unique materials and traditions of *Kōgei* ceramic styles, including current and former Living National Treasures. A selection of works by up-and-coming artists is another highlight of the exhibition. This exhibition—the latest of many that the Panasonic Shiodome Museum of Art has organized to celebrate *Kōgei* and design—will feature about 140 works. Most of the artists are members of the Japan *Kōgei* Association's Ceramic Arts Section.



Top row, from left: Tomimoto, Kenkichi. *Jar with Landscapes and Characters Design in Underglaze Blue and Four-Petaled Floral Motif in Overglaze Enamels, Gold, and Silver*. 1957. The National Museum of Modern Art, Tokyo./ Suzuki, Tetsu. *Green Glaze Vase*. 2019. Private collection./ Maeta, Akihiro. *White Porcelain Jar*. 2012. The National Museum of Modern Art, Tokyo./ Arakawa, Toyozō. *Shino Tea Bowl*. 1957. The National Museum of Modern Art, Tokyo./ Bottom row, from left: Tokuda, Yasokichi III. *Yosai (Gleaming Colors) Bowl, Named Birth*. 1991. The National Museum of Modern Art, Tokyo./ Kakurezaki, Ryūichi. *Wide-Mouthed Bizen Vase*. 2012. Private collection./ Imaizumi, Imaemon XIV. *Bowl with Snowflake Design in Overglaze Enamels and Bush Clover Motif in Sumi-Hajiki*. 2019. Private collection.

Front page Top: Matsui, Kōsei. *Large Neriage (Marbled) Jar with Layered Pattern*. 1979. Ibaraki Ceramic Art Museum. / Bottom: Wada, Akira. *White Porcelain Pedestal*. 2017. Ibaraki Ceramic Art Museum.

Related event: Online Gallery Talk

Viewing period: From 10 a.m. on Friday, February 4, to 10 a.m. on Monday, February 7

Please note that this event will be conducted in Japanese.

For more information about the event, please visit our Japanese website: <https://panasonic.co.jp/ew/museum/>

Also on display The Rouault Gallery is exhibiting works by Georges Rouault from the museum collection. Visitors are welcome to visit the gallery as well.

Panasonic Shiodome Museum of Art ROUAULT GALLERY

4F Panasonic Tokyo Shiodome bldg, 1-5-1
Higashi-Shimbashi, Minato-ku, Tokyo 105-8301, Japan

Access :
8-minute walk from JR Shimbashi Station;
6-minute walk from Shimbashi Station on
the Tokyo Metro Ginza Line, Asakusa Line,
and Yurikamome Line; 5-minute walk from
Shiodome Station on the Oedo Line.



We would like to request that you reserve the date and time of your visit in advance. Please visit our website for more details.

Contact : +81 (0)3-5777-8600 (NTT Call center) Official Website: <https://panasonic.co.jp/ew/museum/en/>

Upcoming Exhibition

Pablo Picasso: Drawing Inspiration

– From the Collection of The Israel Museum, Jerusalem

Apr. 9 – Jun. 19, 2022

